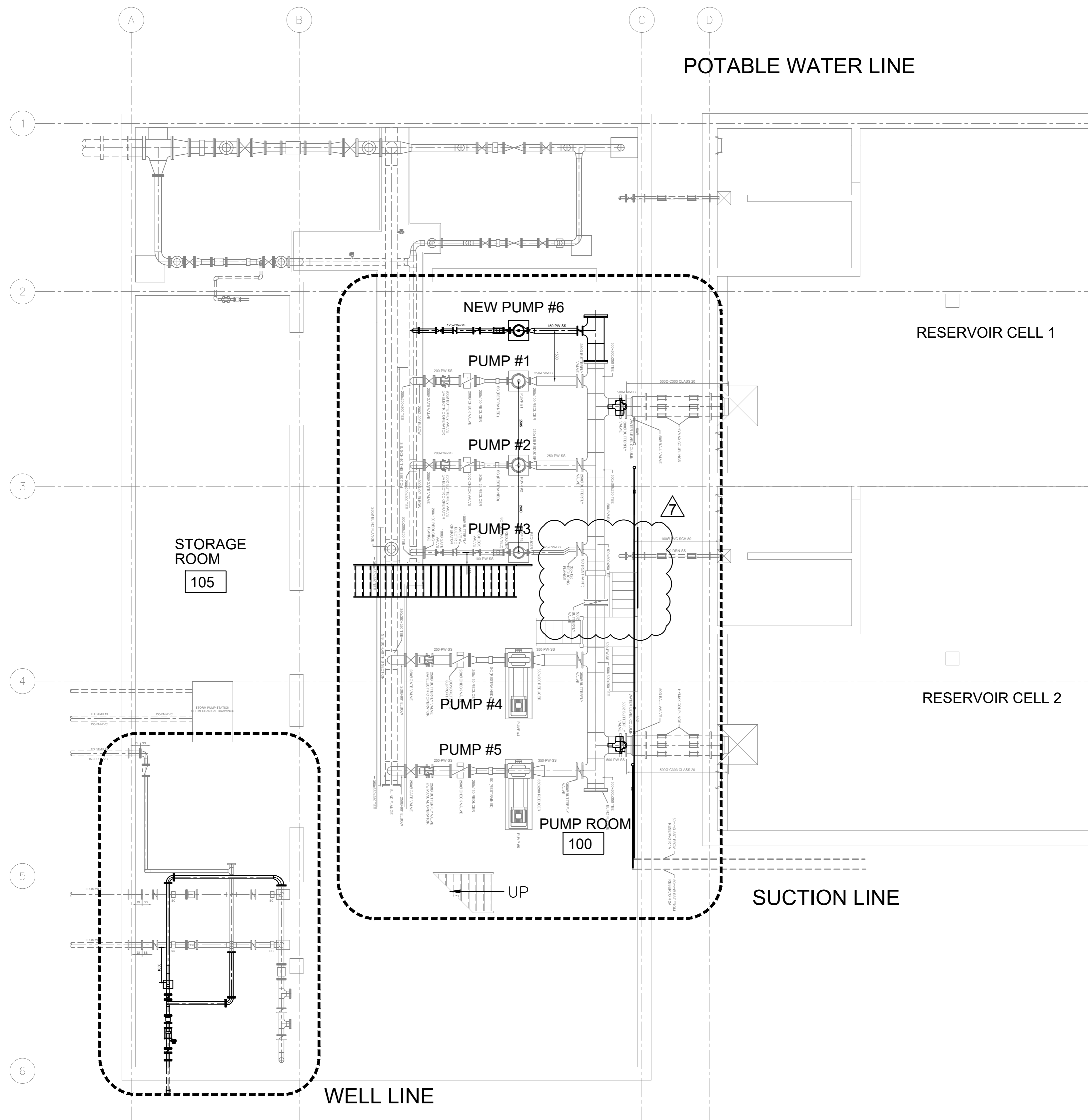




Des.	G.C.	Chk'd.	H.T.
Dwn.	K.C./M.S.	Chk'd.	A.B.
Utility Circ. No.		Index No.	
Const. Inspector			
Scale:	N.T.S.		

NOTE: The location of utilities is approximate only, the exact location should be determined by consulting the municipal authorities and utility companies concerned. The contractor shall prove the location of utilities and shall be responsible for adequate protection from damage.

No.	Description	By	Date (dd/mm/yyyy)
1	50% DESIGN ISSUED FOR REVIEW	G.C.	20/11/2023
2	75% DESIGN ISSUED FOR REVIEW	G.C.	23/02/2024
3	90% DESIGN ISSUED FOR REVIEW	G.C.	27/06/2025
4	DRAFT TENDER	G.C.	15/10/2025
5	ISSUED FOR TENDER	G.C.	09/01/2026
6	ISSUED FOR TENDER (R1)	G.C.	06/03/2026
7	ISSUED FOR ADDENDUM #1	G.C.	18/03/2026



**HIGH LIFT PUMPS
SECTIONS**

Contract No. **CP000902** Dwg. No. **PR204**
Sheet 23 of 112

Asset No.
Asset Group

CARINA DUCLOS, P. ENG. Director Infrastructure Services
ERIC OUIMET, P. ENG. Project Manager Infrastructure Services

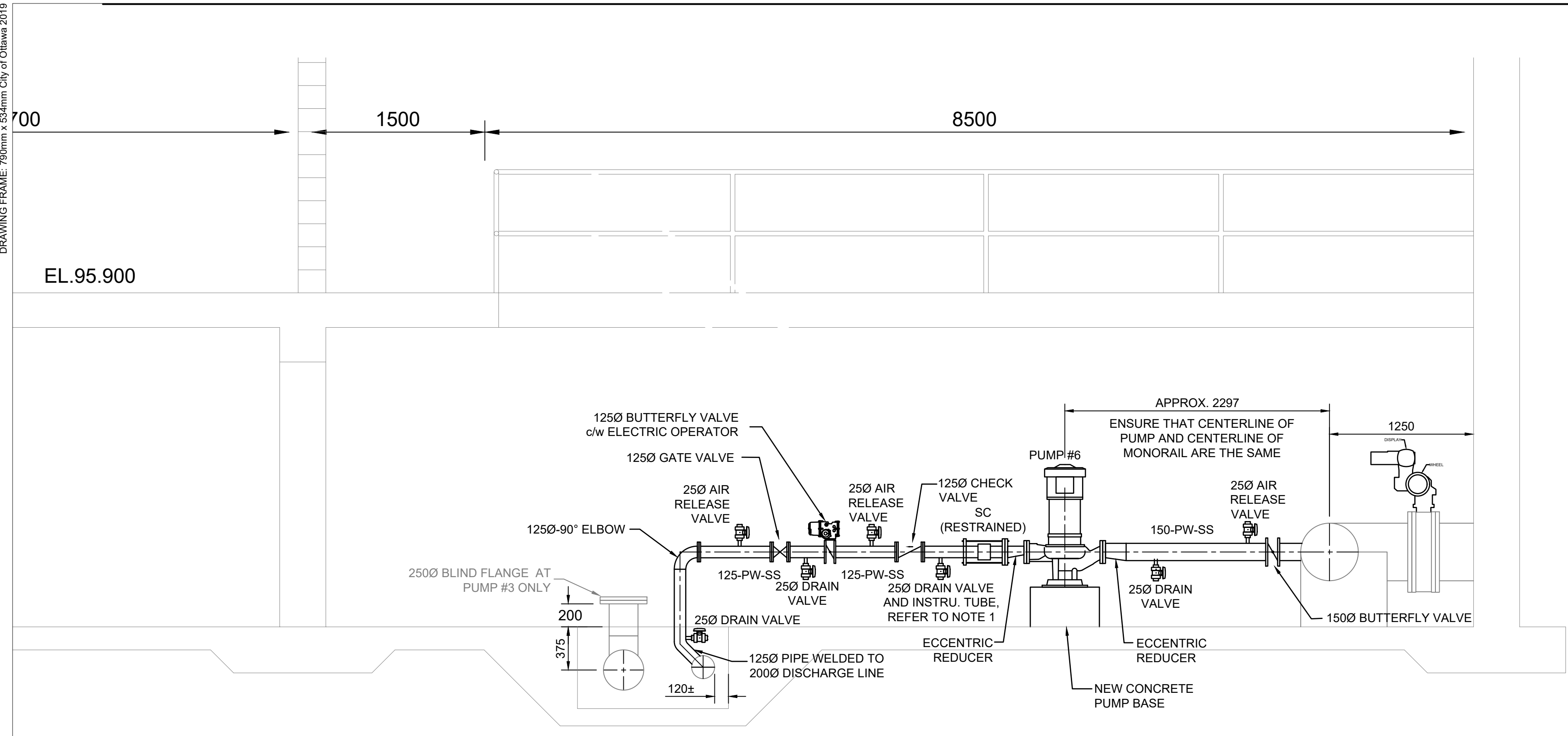


Des. G.C. H.T.
Dwn. K.C./M.S. Chk'd. A.B.
Utility Circ. No. Index No.
Const. Inspector
Scale: 1:30

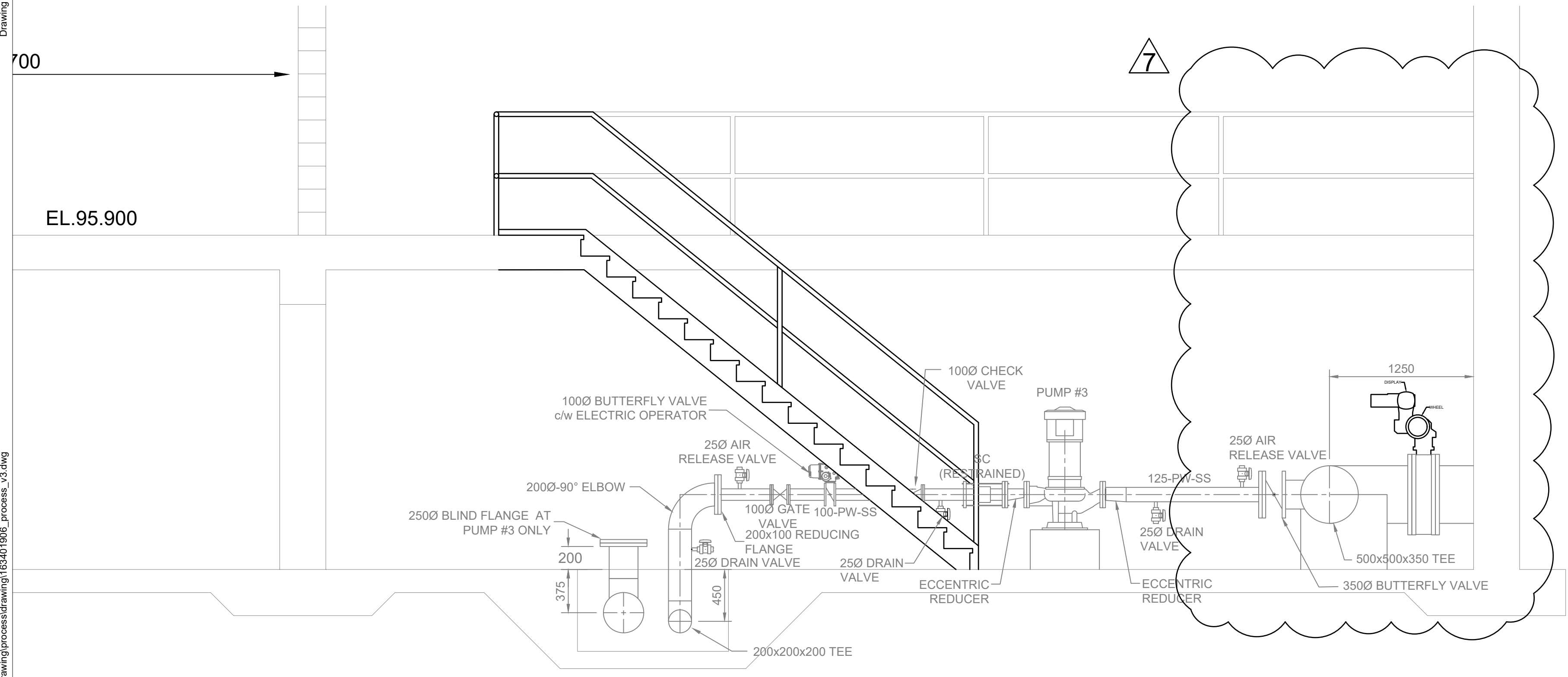
NOTE: The location of utilities is approximate only, the exact location should be determined by consulting the municipal authorities and utility companies concerned. The contractor shall prove the location of utilities and shall be responsible for adequate protection from damage.

No.	Description	By	Date (dd/mm/yyyy)
1	50% DESIGN ISSUED FOR REVIEW	G.C.	20/11/2023
2	75% DESIGN ISSUED FOR REVIEW	G.C.	23/02/2024
3	90% DESIGN ISSUED FOR REVIEW	G.C.	27/06/2025
4	DRAFT TENDER	G.C.	15/10/2025
5	ISSUED FOR TENDER	G.C.	09/01/2026
6	ISSUED FOR TENDER (R1)	G.C.	06/03/2026
7	ISSUED FOR ADDENDUM #1	G.C.	18/03/2026

- NOTE:
1. PLATFORM RAILINGS ARE NOT FULLY SHOWN FOR CLARITY.
 2. INSTRUMENT TUBE ORIENTATION AND CONNECTIONS TO MATCH EXISTING PUMPS.



SECTION B
PR204 PR202



SECTION C
PR204 PR202

DRAWING FRAME: 790mm x 594mm City of Ottawa 2019
Drawing Number: PR204
2025-03-16 2:55 PM w:\active\1634_01636\design\drawing\process\drawing\163401636_process_03.dwg